

FOR SALE

8,190 SF Industrial Building



13007 Park Street, Santa Fe Springs, CA

Offering Summary

interPres Commercial Realty is proud to offer for sale an approx. 8,190 SF industrial building located in the heart of Santa Fe Springs. This high-image, highly visible, corner lot building features approximately 1,888 SF of nicely appointed office space, high warehouse clearance, two 10'x14' ground level loading doors, large fenced yard, 480 volt power, superior corporate image and a new roof (January 2014) with warranty. The property is very well located with immediate access to the 5, 605 and 105 Freeways.

For further information, contact

Adam J. Meyer

Associate Vice President
adam@interpresrealty.com
CA BRE Lic. #01911011

Everett S. Phillips

Associate
everett@interpresrealty.com
CA BRE Lic. #01992837

Peter M. Pistone, SIOR, CCIM

President
peterp@interpresrealty.com
CA BRE Lic. #01007013

interPres BRE License #-1774875



562.692.2200

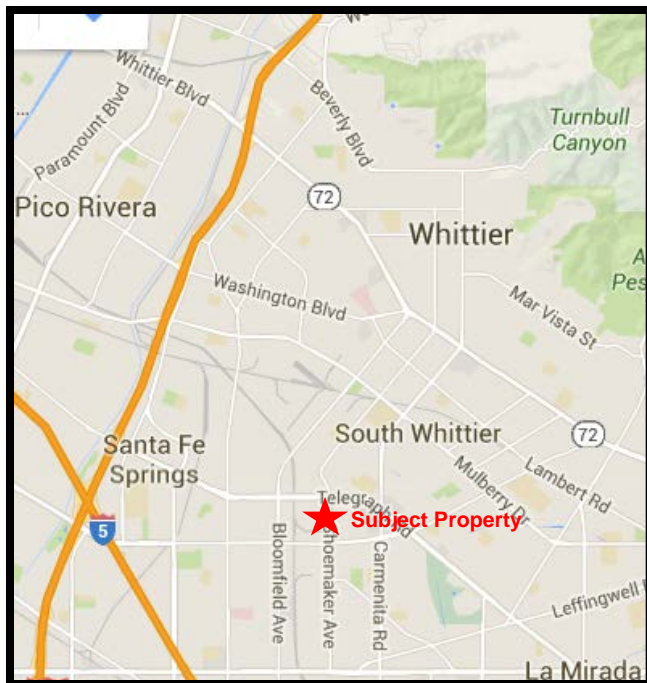
13191 Crossroads Parkway N., Suite 585
City of Industry, CA 91746

13007 Park Street, Santa Fe Springs, CA

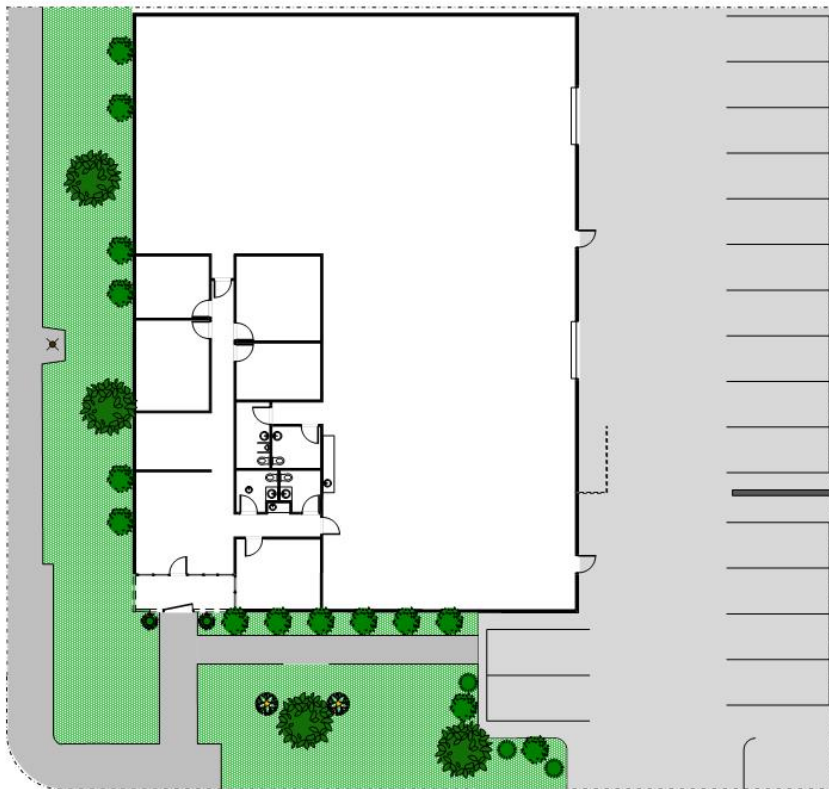
Property Features

Property Name	Park Street
Property Type	Industrial-Whse/Mfg
Building Size	8,190 SF
Office Size	1,888 SF
Clear Height	14'-16'
Power	200A-277/480V
Truck Loading	2 Grade Level Doors
Parking	16
Zoning	M2
Construction Type	Concrete Tilt-Up
Year Built	1978

Location Map



Site Plan



The information contained herein has been obtained from sources we deem reliable. While we have no reason to doubt its accuracy, we do not guarantee it. All measurements, financial projections, renderings, etc. are for example purposes only. We strongly encourage all potential buyers to complete a thorough investigation of the Property to satisfy themselves as to the physical condition, financial, governmental, zoning, and all other matters relating to the Property.



562.692.2200

13191 Crossroads Parkway No., Suite 585
City of Industry, CA 91746