

Available For Lease

Industrial Building



16209 Ward Way, City of Industry, CA

Offering Summary

interPres Commercial Realty is proud to offer for lease a 9,727 SF portion of a great industrial building at 16207 Ward Way, Industry, CA 91745. This building, built in 1962, is in a fantastic City of Industry location near the 60 and 605 Freeways. Must see!

For further information, contact

Krikor Kalaydjian

Associate
krikork@interpresrealty.com
Lic. #01930493

Adam Meyer

Senior Associate
adamm@interpresrealty.com
Lic. #01911011

Matt Eddy

Vice President
matte@interpresrealty.com
Lic. #01844956

interPres BRE License #-1774875



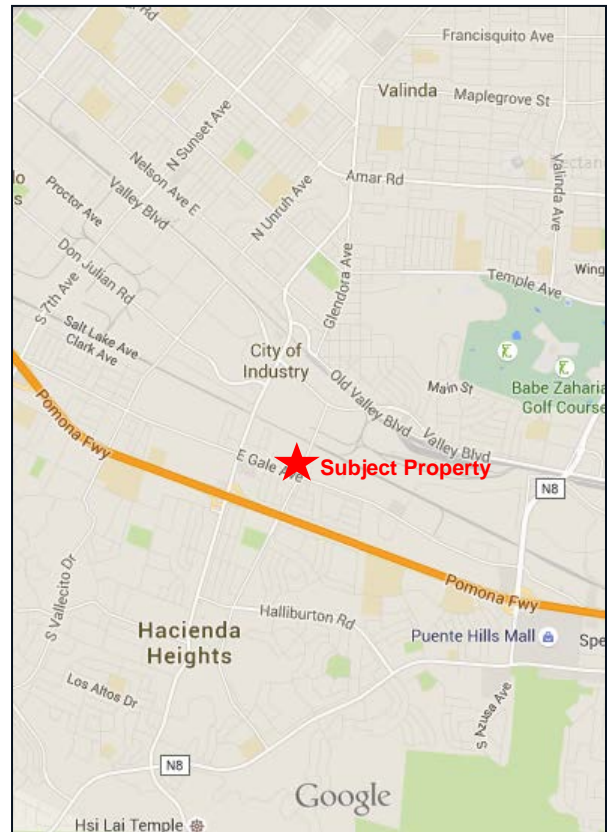
562.692.2200
13191 Crossroads Parkway N., Suite 585
City of Industry, CA 91746

16209 Ward Way, City of Industry, CA

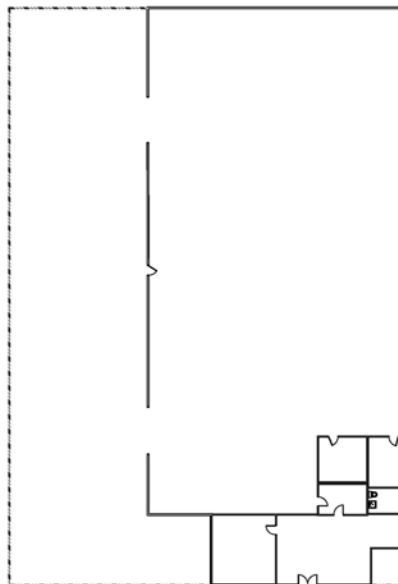
Property Features

| | |
|-------------------------|----------------|
| Property Name | 16209 Ward Way |
| Property Type | Industrial |
| Building Size | 9,727 SF |
| Office Size | 1,300 SF |
| Power | 400 Amps |
| Clearance Height | 12-15' |
| Truck Loading | 2 Ground Level |
| Parking | 12 |
| Fenced Yard | Yes |
| Year Built | 1962 |

Location Map



Site Plan



The information contained herein has been obtained from sources we deem reliable. While we have no reason to doubt its accuracy, we do not guarantee it. All measurements, financial projections, renderings, etc. are for example purposes only. We strongly encourage all potential buyers to complete a thorough investigation of the Property to satisfy themselves as to the physical condition, financial, governmental, zoning, and all other matters relating to the Property.



562.692.2200
13191 Crossroads Parkway No., Suite 585
City of Industry, CA 91746