

Available For Sale

Manufacturing Building



766 Todd Avenue, Azusa, CA

Offering Summary

interPres Commercial Realty is proud to offer for sale a 10,960 SF freestanding manufacturing building located at 766 Todd Avenue, Irwindale, CA. The three buildings have 2 street access, 4 ground level loading doors, good power, high clearance, a large yard and approximate 850 SF of nicely appointed offices. It is very well located with immediate access to the 210 and 605 Freeways. Must see!

For further information, contact

Krikor Kalaydjian

Associate
krikork@interpresrealty.com
Lic. #01930493

Matt Eddy, CCIM

Vice President
matte@interpresrealty.com
Lic. #01844956

Peter Pistone, SIOR

President
peterp@interpresrealty.com
Lic. #01007013

interPres BRE License #-1774875



562.692.2200

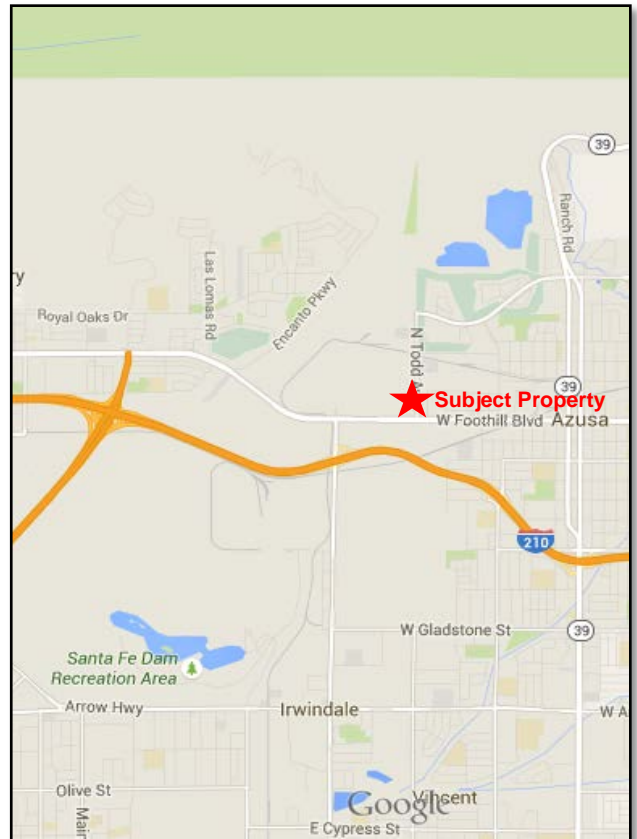
13191 Crossroads Parkway N., Suite 585
City of Industry, CA 91746

766 Todd Ave., CA

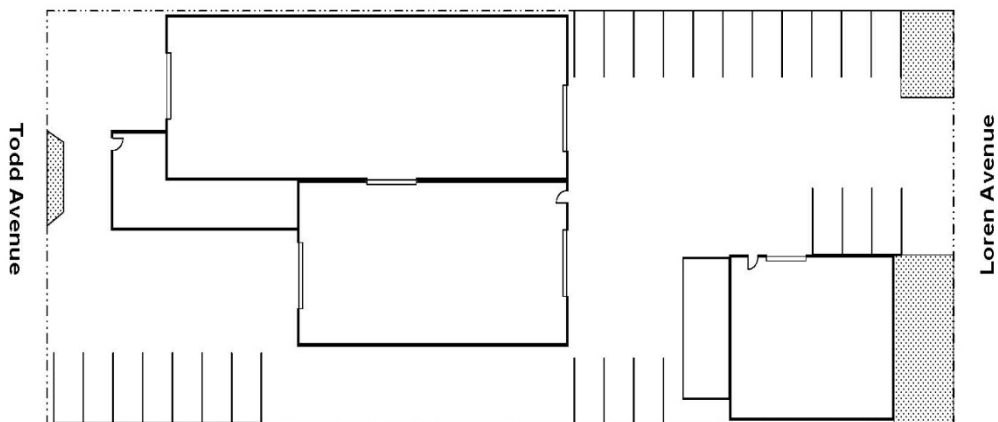
Property Features

Property Name	766 Todd Ave.
Property Type	Industrial-Manufacturing
Building Size	10,960 SF
Office Size	849 SF
Power	400 Amps
Clearance Height	14'-20'
Truck Loading	3 Ground Level
Parking	25
Fenced Yard	Yes
Year Built	1957

Location Map



Site Plan



The information contained herein has been obtained from sources we deem reliable. While we have no reason to doubt its accuracy, we have not verified it and do not guarantee or warrant it. All renderings and all measurements are approximate.

The information contained herein has been obtained from sources we deem reliable. While we have no reason to doubt its accuracy, we do not guarantee it. All measurements, financial projections, renderings, etc. are for example purposes only. We strongly encourage all potential buyers to complete a thorough investigation of the Property to satisfy themselves as to the physical condition, financial, governmental, zoning, and all other matters relating to the Property.



562.692.2200
13191 Crossroads Parkway No., Suite 585
City of Industry, CA 91746